

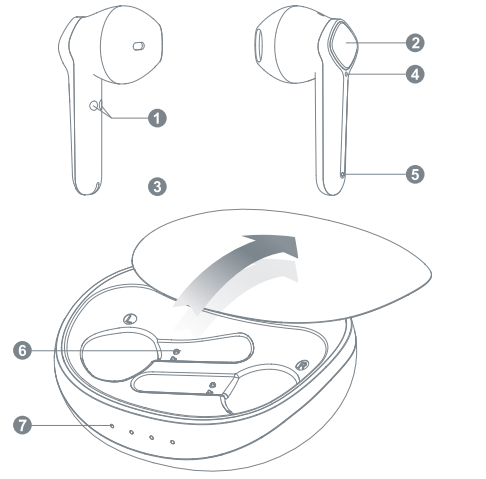
# Mibro Earbuds S1

## User Manual

Thank you for choosing our product, hope the fashionable appearance and high quality stereo can enrich your life.

**Note: Please fully charge it with the charging case before the first use when you receive the product.**

### Identifying Key Parts

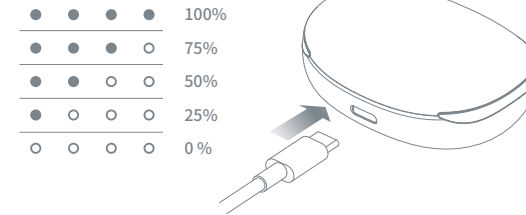


mibro

### Charging

When charging, the light on the side of the charging case will flicker in a circle, and the light will stay on constantly after being fully charged.

- Charging when the indicator light flashes.
- When all four indicators are on, the battery is fully charged.



### Getting Starts

- Slide the charging box upwards, and the Earbuds will automatically turn on and into the bluetooth pairing mode.
- Open the Bluetooth of your phone system, search the Bluetooth name "Mibro Earbuds S1", click the device name and complete the pairing.
- Take out the earbuds and wear it. You will hear a "beep" sound, indicating that both ears are connected and music can be played.

### Getting Off

The earbuds turn off automatically if:

- You put earbuds back to the charging case.
- When earbuds leave the charging case, but haven't connect to any devices within 5 minutes.
- When the earphone battery is low (please charge it in time).

For above situation, please press and hold theMFB for 8 seconds to Power ON.

### Functions

You can operate MFB to get certain functions as below:

- Power On/Off**  
In the on/off state, long press for 8 seconds to switch off/on.
- Play / Pause**  
When playing music, double-click MFB(R or L) to pause , double-click again to resume.
- Previous Track /Next Track**  
When playing music, Quick triple hit MFB(L) to previous track, Quick triple hit MFB(R) to next track.
- Volume Increase Or Decrease**  
When playing music, Click MFB(L) once to decrease the volume, Click MFB(R) once to increase the volume.
- Start voice assistant**  
In the Bluetooth connection state, Quick triple hit MFB(L or R) to activate the voice assistant.

### 6.Answer/End a call

When there' s an incoming call,Click MFB once to answer ,you can end it by double-click MFB again.

### 7.Reject An Incoming Call

When there's an incoming call press and hold the MFB for 3 seconds to reject.

### Safety Rules

- Avoid dripping and dropping.
- Use original or certified cables.
- Never disassemble or modify your earbuds for any reasons to avoid any damages and dangers.
- Keep the earbuds dry and do not submerge it in water.
- Keep out of reach of children, small parts included may be a choking hazard,and avoid using the LED indicator close to the eyes of children or animals.
- Do not use this earbuds during a thunderstorm to avoid irregular function and increased risk of the electric shock.
- Clean with a dry, soft lint-free cloth, do not use harsh chemicals or strong detergents to clean.
- The product shall not be exposed to excessive hot or wet.

### Hearing Safety

- To avoid hearing damage, do not listen for long time at high volume.
- Do not turn the volume so high that you're unable to hear your surroundings.
- Do not use earbuds while driving.
- You should use with caution or temporarily discontinue using in potentially hazardous situations.



### Name and content of hazardous substances

Part name	Hazardous substances					
	Pb	Hg	Cd	Cr(VI)	PBB	PBDE
Earbuds	○	○	○	○	○	○
Battery	○	○	○	○	○	○
Earplugs	○	○	○	○	○	○
Charge Box	○	○	○	○	○	○

This table is prepared in accordance with GB/T 26572.

- Indicates that the content of the hazardous substance in all homogeneous materials of the component is below the limit specified in GB/T 26572.
- ✗ it means that the content of the hazardous substance in at least one homogeneous material of the component exceeds the limit specified in GB/T 26572.



### Performance failure and after sales regulations

Name	Performance fault table
Earbuds	1. The earbuds is silent during use. 2. During the call, the other party cannot hear the sound. 3. Unable to charge, the charging indicator is not on.

### Non warranty regulations

- Wear and dirt caused by users' use, such as scratches and color changes; As well as damage caused by contact with chemical reagents, sharp objects, falling, extrusion and deformation;
- Unauthorized maintenance, collision, misuse, negligence, abuse, water ingress, accidents, and failures caused by the use of non-standard accessories of the product;
- Tearing, altering labels, forging anti-counterfeiting marks, etc.
- Damage caused by force majeure;
- Non compliance with performance faults listed in the performance fault table;

If you need after-sales service, please contact Mibro customer service:  
Website: [www.mibrofit.com](http://www.mibrofit.com)  
customer service: 400-0908-508

**Attention:**  
The illustrations of products and accessories in the manual are schematic diagrams for users' reference only. Due to the update and upgrading of this product, the actual product may be different from the schematic diagram. Please take the actual product as the standard!

- Mibro brand owns the final right to interpret the goods.

### FAQ

**Q: The earbuds is silent while another is sound.**  
**A:** 1. It may be that both earbuds can not be connected normally. In extreme cases, this kind of situation will occur. Please put the earbuds back into the charging box, take it out and reconnect it after 8 seconds of reset;  
2. It may be that the silent earbuds is dead. Please put both ebuds back into the charging box and fully charge them before taking them out for reuse.

**Q: The earbuds didn't responsive when I get them from the charging case, it can't turn on automatically.**  
**A:** Please check the power of charging case, if there is no power the earbuds can't turn on automatically or you can manually turn it on (long touch MFB for 2 seconds).

**Q: I have established connection with my smartphones, but I am not hearing any sounds?**  
**A:** Please make sure that you have turned up the volume of both devices Smartphone requires you to set up the Bluetooth earbuds as an audio output devices before transimition of sound. Please check the instruction of your smartphone for details. If you are using a music player or other Bluetooth devices, please make sure it supports A2DP stereo music profile.

**Q: Why the connection is not stable and cuts out intermittently?**  
**A:** Please make sure there are no obstacles between the earbuds and your Bluetooth device; please make sure there is no radio or WiFi interference nearby.

**Q: The sound is not very clear or the caller cannot hear my voice clearly.**  
**A:** Please adjust the volume on your phone and earbuds. Make sure there is no source of interference nearby. Stay close to your smartphone check if there's any improvement.

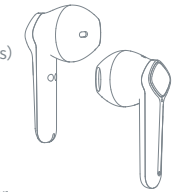
### Parking List

Charging Box X1, Earbuds X2, Charging cable X1, User Manual X1

### Basic Parameters

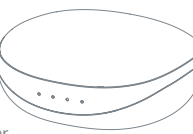
Earbuds Basic Parameters:

BT Model	XPEJ003
BT Version	V5.0
BT Range	≤10m/33ft
Battery Capacity	35mAh (Per Earbuds)
Charging Time	About 1.5 hours
Play Time	About 5 hours
Stand By	About 60 hours
Input	5V==100mA
Battery Type	Lithium ion polymer
Weight	About 3.8g (Per Earbuds)
Waterproof	IPX5



Charge Box Basic Parameters:

Battery Capacity	600mAh
Input	5V==500mA
Output	5V==150mA
Charging Time	About 4 hours
Battery Type	Lithium ion polymer
Weight	About 42g



**Manufacturer:**  
Zhenshi Information Technology (Shanghai) Co., Ltd.  
**Address:**  
Room 4015, Building 2, No. 588, Zixing Road, Minhang District, Shanghai

mibro